

### What we offer

- Professional and knowledgeable staff
- Access to study space
- Access to online knowledge resources
- Expert literature searches
- Efficient document and article supply
- Help with finding online resources
- Help with keeping up to date
- Information skills training



Expert staff

Extensive resources

Online access

### What do we do to support healthcare organisations?

- Support research and innovation
- Facilitate exploration of treatment options
- Support the education of future NHS staff
- Find evidence to inform business cases
- Discover information for clinical audits
- Support organisational knowledge management
- Provide advice on high quality, trusted and reliable information for patients and the public

## Your NHS Libraries

Knowledge for patient care, decision-making, learning and research

Open to all healthcare staff and students on placement across the South



Developing people  
for health and  
healthcare

[www.hee.nhs.uk](http://www.hee.nhs.uk)

“Your training, advice and professionalism has been of the highest standard. The library is an essential service for those of us in research.”

*Nurse Researcher, Royal Cornwall Hospitals*

“Essential assistance in literature searches... as a result... patients will have an improved care pathway”

*Oncology Consultant, Taunton and Somerset NHS Trust*



## Make the most of library resources

There are library and knowledge services based in the locations below, working together to ensure that healthcare staff and students have access to the right knowledge and evidence, at the right time.

For contact details for your local service please visit [www.hlisd.org](http://www.hlisd.org)

"The evidence gave us confidence that we were approaching the changes in the right way especially the potential safety risks if the staffing levels were incorrect."

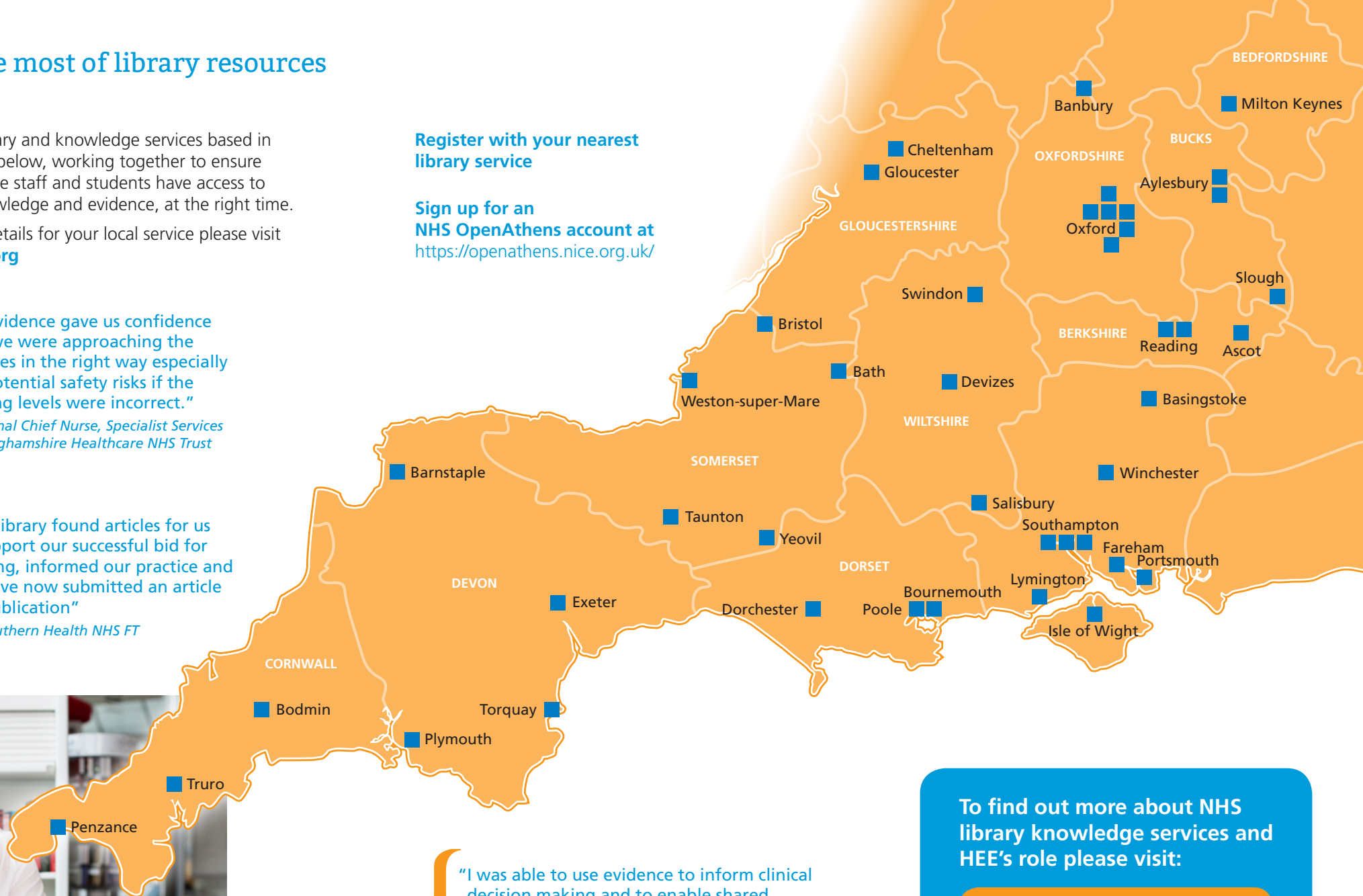
*Divisional Chief Nurse, Specialist Services Buckinghamshire Healthcare NHS Trust*

"The library found articles for us to support our successful bid for funding, informed our practice and we have now submitted an article for publication"

*OT, Southern Health NHS FT*

Register with your nearest library service

Sign up for an NHS OpenAthens account at <https://openathens.nice.org.uk/>



"I was able to use evidence to inform clinical decision making and to enable shared decision-making concerning treatment. The research found has been shared with our service, and will inform future patients presenting with this unusual condition."

*CBT Therapist, Oxford Health NHS Foundation Trust*

To find out more about NHS library knowledge services and HEE's role please visit:

<http://www.hee.nhs.uk/lks>